



# Somatostatin (ABT232) Mouse mAb

<b>Catalog No</b>	YP-Ab-15068
<b>Isotype</b>	IgG
<b>Reactivity</b>	Human;Mouse;Rat
<b>Applications</b>	IHC
<b>Gene Name</b>	SST
<b>Protein Name</b>	Growth hormone release inhibiting factor;Growth hormone release-inhibiting factor;Prepro somatostatin;SMS_HUMAN;SMST;Somatostatin 14;Somatostatin 28;Somatostatin-14;SST
<b>Immunogen</b>	Synthesized peptide derived from human Somatostatin
<b>Specificity</b>	The antibody can specifically recognize human Somatostatin protein.
<b>Formulation</b>	PBS, pH7.2, 0.03% Porcolin 300, containing stabilizing protein
<b>Source</b>	Monoclonal Mouse IgG2b, Kappa
<b>Purification</b>	The antibody was affinity-purified from mouse ascites by affinity-chromatography using specific immunogen.
<b>Dilution</b>	IHC-p 1:200-400,
<b>Concentration</b>	1 mg/ml
<b>Purity</b>	≥90%
<b>Storage Stability</b>	-20°C/1 year
<b>Synonyms</b>	Growth hormone release inhibiting factor;Growth hormone release-inhibiting factor;Prepro somatostatin;SMS_HUMAN;SMST;Somatostatin 14;Somatostatin 28;Somatostatin-14;SST
<b>Observed Band</b>	
<b>Cell Pathway</b>	Cytoplasmic
<b>Tissue Specificity</b>	Pancreas
<b>Function</b>	function:Somatostatin inhibits the release of somatotropin.,online information:Somatostatin entry,pharmaceutical:A synthetic analog known as octreotide or SMS 201-995 is available under the name Sandostatin (Novartis). It is used for the treatment of a variety of disorders including acromegaly and the symptomatic treatment of carcinoid tumors and vasoactive intestinal peptide tumors.,similarity:Belongs to the somatostatin family.,
<b>Background</b>	The hormone somatostatin has active 14 aa and 28 aa forms that are produced by alternate cleavage of the single preproprotein encoded by this gene. Somatostatin is expressed throughout the body and inhibits the release of numerous secondary hormones by binding to high-affinity G-protein-coupled somatostatin receptors. This hormone is an important regulator of the endocrine system through its interactions with pituitary growth hormone, thyroid stimulating



hormone, and most hormones of the gastrointestinal tract. Somatostatin also affects rates of neurotransmission in the central nervous system and proliferation of both normal and tumorigenic cells. [provided by RefSeq, Jul 2008],

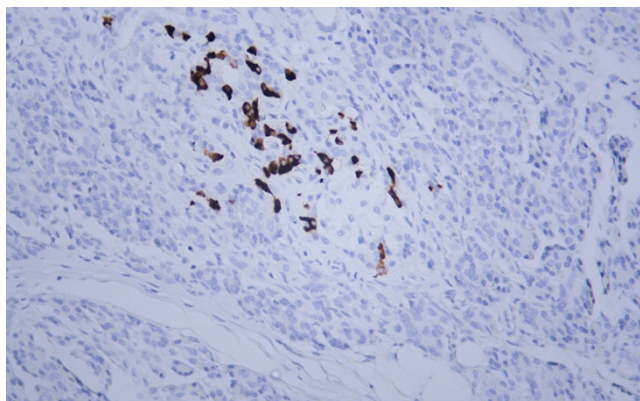
**matters needing attention**

Avoid repeated freezing and thawing!

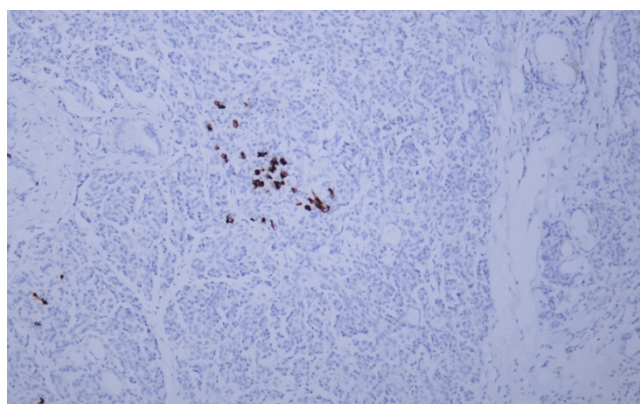
**Usage suggestions**

This product can be used in immunological reaction related experiments. For more information, please consult technical personnel.

**Products Images**



Human pancreas tissue was stained with Anti-Somatostatin (ABT232) Antibody



Human pancreas tissue was stained with Anti-Somatostatin (ABT232) Antibody